

Volvo Construction Equipment  
Building Tomorrow



# DEMOLITION

Volvo Construction Equipment



# A passion for performance

At Volvo Construction Equipment, we're not just coming along for the ride. Developing products and services that raise productivity – we are confident we can lower costs and increase profits for industry experts. Part of the Volvo Group, we are passionate about innovative solutions to help you work smarter – not harder.

## Helping you to do more

Doing more with less is a trademark of Volvo Construction Equipment. High productivity has long been married to low energy consumption, ease of use and durability. When it comes to lowering life-cycle costs, Volvo is in a class of its own.

## Designed to fit your needs

There is a lot riding on creating solutions that are suited to the particular needs of different industry applications. Innovation often involves high technology – but it doesn't always have to. Some of our best ideas have been simple, based on a clear and deep understanding of our customers' working lives.



## You learn a lot in 180 years

Over the years, Volvo has advanced solutions that have revolutionized the use of construction equipment. No other name speaks Safety louder than Volvo. Protecting operators, those around them and minimizing our environmental impact are traditional values that continue to shape our product design philosophy.

## We're on your side

We back the Volvo brand with the best people. Volvo is truly a global enterprise, one that is on standby to support customers quickly and efficiently – wherever they are.

## We have a passion for performance.



Volvo Trucks

Renault Trucks



Mack Trucks



UD Trucks



Volvo Buses



Volvo Construction Equipment



Volvo Penta



Volvo Financial Services

# Safe and sound

Volvo high reach excavators are built to ensure maximum safety in all demolition applications. A sturdy frame and cab offer ultimate protection against the falling debris that is common in demolition projects, and a wide, clear view of the jobsite provides excellent visibility for enhanced safety.

## Rear-view and side-view cameras

Offering the driver a complete view of the jobsite, rear- and side-view cameras ensure the machine is operated safely at all times.



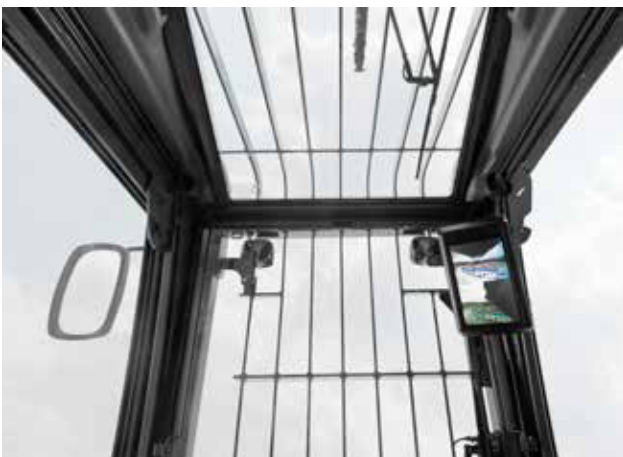
## Cradles, working platform and rails

Cradles, working platforms and rails increases safety when assembly or disassembly is taking place for switching applications, in transportation and when carrying out maintenance.



## LEXAN window on roof with washer/wiper system

A roof LEXAN window protects the operator underneath from falling objects for increased safety and upwards visibility. The window can be washed by a washer and wiper system that can be operated by a front window switch.



## Total moment indicator

For ultimate safety in demanding operations, a Total moment indicator warns the operator if the machine approaches the maximum safe working load.





# FRAME-MOUNTED FALLING OBJECT GUARD (FOG)

A frame-mounted Falling Object Guard ensures safety when there is a greater risk of the cab being struck by falling debris. The wide open-able front guard facilitates cleaning.



Model	High Reach		Mid-Reach	
	Max. Pin Height	Max. Tool Weight	Max. Pin Height	Max. Tool Weight
<b>EC380E</b>	23 m	3 tonnes	15.3 m	4 tonnes
<b>EC480E</b>	28 m	3.5 tonnes	15.8 m	5 tonnes
<b>EC750E</b>	26/36 m	5/3.6 tonnes	18 m	6.5 tonnes

# INCREASED TOOL WEIGHT AND PIN HEIGHT

For better productivity the machine's structure and hydraulic system have been optimized to carry heavier attachments, giving you more value for money. The maximum pin height has been increased to widen your working range and maximize productivity.

# Bringing down the house

The EC380EHR, EC480EHR and EC750EHR are equipped with the latest innovations to increase your productivity. These machines are designed to make your working day worth more, and a robust structure, heavy tool weight and outstanding hydraulics ensure a strong performance in even the toughest of demolition projects.

## Volvo's unique initial set up solution

Easy unloading, hydraulic track extension and Volvo's quick boom assembly system take all the heavy lifting out of getting these machines work ready. Full commissioning is a quick job - mostly from the comfort and safety of the cab.



## Water spray system

Volvo offers a complete dust suppression solution with a 30 lpm hydraulic lifting pump, which can eliminate the need of a separate truck for pumping water. Four nozzles, two on each side of the arm, provides a fine mist that encapsulates the dust and the system can also be used for cleaning the machine with the high pressure water gun mounted behind the cab.



## Stable undercarriage designed for demolition

The stable undercarriage designed for demolition has improved working range across all 360° positions, for less repositioning of the machine to maximize production efficiency. For easy operation, the extendable undercarriage allows the operator to effortlessly retract the undercarriage for transportation and expand it for ultimate stability when arriving at the worksite.



## Reach for the sky

Knock demolition down to size with the Multi-Demolition (MD) boom, engineered to offer more options and reach for Volvo excavators and high reach excavators. When fitted in the straight position, the MD boom adds 3.4m to the pin height – enabling the MD boom to carry up to five tonnes. When fitted in the bent position, the MD boom allows a pin depth of up to 7.0m, making it ideal for underground demolition jobs.



# Heavy-duty demolition

Volvo CE is dedicated to producing the ultimate in heavy-duty demolition machinery. Purpose-built to suit the needs of this demanding task, these high reach excavators are equipped with robust components and a powerful engine to ensure you can keep working shift after shift.

## Heavy-duty protection

Heavy duty protection options give more protection to the machine, keeping it in good condition for longer. A range of durable and robust components and parts can be added for machine longevity and performance.



## Service Network

Volvo's team of experts is always ready to help using local knowledge and global experience. With our extensive infrastructure of technicians, workshops and dealers, Volvo CE has a comprehensive network to fully support you at all times.



## Robust frame, boom and arm

The robust frame, heavy-duty boom and arm increases reliability and machine uptime, even in severe applications. Steel strips are welded under the arm to further increase protection and various boom and arm configurations are available.



## Volvo D13 Stage V engine

The latest generation Volvo Stage V engine fully meets the demands of the latest emissions regulations. Featuring Volvo Advanced Combustion Technology (V-ACT), this engine is designed to deliver superior performance and fuel efficiency. The engine uses precise, high pressure fuel injectors, turbo charger, an air-to-air intercooler and electronic engine controls to optimize machine performance.







# PURPOSE BUILT FOR DEMOLITION

The Volvo-designed high-reach demolition machines are produced in Volvo's industry-leading manufacturing facilities and are fully supported by Volvo's global service and spare parts network –increasing machine uptime.

# Built to demolish

## Safe cradles with working platforms and rails

Cradles, working platforms and rails increases safety when assembly or disassembly is taking place.



## Modular Boom Solution

The hydraulic modular joint uses a hydraulic lock mechanism to release digging equipment and change from high reach to backhoe configuration.



## Total Moment Indicator

A total moment indicator warns the operator if the machine approaches the maximum safe working load.

## Straight and conventional boom

Easy to change from the Ultra High Reach boom and arm to a standard configuration or a straight boom.

## Hands on tilt

The hands-on tilt function, allows the operator to focus on getting the work done, increasing productivity and operator comfort.





### **High Visibility Cab**

The Volvo high visibility cab – designed specifically for high reach demolition – ensures higher productivity

### **Front-end camera and dedicated in-cab monitor**

Two demolition arm mounted cameras give a thorough view of the attachment, which helps efficient and safe operation.

### **Tilting cab**

The standard tilting cab pivots up to 30 degrees for enhanced visibility and reduced fatigue on high-reach jobs.



### **Extendable Undercarriage**

Volvo's unique sliding tube design on the retractable undercarriage is exceptionally durable, and provides a wide stance for increased safety and better productivity.



### **Maximize productivity**

Fitting the Volvo demolition machines with the extension and the digging boom increases the versatility and productivity.

### **Dust Suppression**

Four nozzles provides a fine mist that encapsulates the dust and can clean your machine.

### **Heavy-duty protection**

Heavy duty protection options give more protection to the machine, keeping it in good condition for longer



# VOLVO CARE CAB

The Volvo high visibility cab – designed specifically for high reach demolition – ensures higher productivity. The high comfort cab features conveniently positioned controls and in-cab LCD display for enhanced ease of operation. For increased safety, our Volvo Care Cab is equipped with laminated front and right hand windows..

# A vision for demolition

These high reach excavators are equipped with a Volvo cab that has been designed to offer industry-leading levels of comfort. A high visibility cab and carefully placed cameras ensure operators have a clear view of the jobsite at all times, for the ultimate safe, productive working environment.

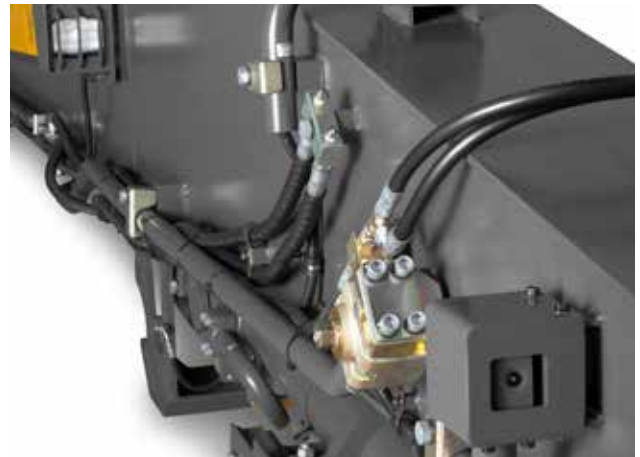
## Guaranteed durability

Increase your uptime using heavy-duty front and rear frames, hitch and wet disk brakes. Volvo proven durability and the support of extensive warranty options means you never need to worry about getting the job done. Strength and durability are hallmarks of the Volvo articulated hauler.



## Over fifty years strong

Fifty years and fifty tonnes later, Volvo is the world's leading manufacturer of articulated haulers. We invented the concept and have been developing and building these machines for over 50 years – it has come a long way from its original 10 tonne articulated hauler. With proven success over the years, the machines include innovative technology and the renowned Volvo engine.



## Service access

With industry-leading access, servicing your machine is quick and easy. The front grill swings down, opening a service platform with anti-slip steps. The electric hood opens to 90 degrees, allowing full and safe access to the engine compartment.



## Volvo dealer network

The exclusive Volvo dealer network is there to support you whenever you need it. Volvo offers a number of services, local knowledge and global experience, including telematics machine monitoring – CareTrack™ and MATRIS™ – as well as superb parts availability.



# A versatile demolition addition

These Volvo high reach excavators are a versatile addition to your demolition fleet. Compatible with a wide range of Volvo attachments and built to work both a variety of boom types, these machines are the ideal partner for all demolition projects.

## Auxiliary hydraulics and dedicated drain lines

To achieve the correct flow and superior pressure for hydraulic attachments such as mowers, grinders, shears, crushers and tilt rotators, the machine can be factory fitted with a wide variety of hydraulic lines, using breaker and shear piping as well as rotator piping for an improved working environment.



## Attachments Management System

The attachment management system – controlled through the monitor – stores the settings for up to 20 different hydraulic attachments for ease of operation. Depending on the hydraulic options configured, the management system can store flow, maximum pressure, one or two-way flow, push, toggle and/or proportional control. The system offers password protection, whereby only approved personnel can set up or alter the attachment parameter settings.



## Straight & conventional boom

An innovative design makes it easy to change from the Ultra High Reach boom and arm to a standard configuration or a straight boom, so your excavator will stay busy even when you don't have high-reach projects.



## Volvo Quick Couplers

Volvo offers a full range of quick couplers, including its dedicated S-type coupler, that are perfectly matched to Volvo's bucket range to ensure high break-out forces at all times. The Volvo universal quick coupler picks up a variety of attachments from various manufacturers. All Volvo quick couplers meet the latest safety regulations.





# VOLVO PATENTED MODULAR BOOM SYSTEM

For ultimate versatility, the innovative hydraulic modular joint uses a hydraulic lock mechanism to release digging equipment and change from high reach demolition boom to a standard configuration.

# Ultimate demolition

## Side impact protection

The bolt-on side impact protection system protects the superstructure from damage.

## Heavy-duty protection

Heavy duty protection options give more protection to the machine, keeping it in good condition for longer.

## Falling object guard

A frame-mounted falling object guard protects the operator and cab from falling debris, enhancing safety and machine uptime.

## Swing-ring protection

Swing-ring protection guard protects the swing ring bearing seal and grease piping from damage by rebar, timber or other debris.



## Attachment management

The password protected attachment management system stores settings for up to 20 different hydraulic attachments.

## Cylinder guards

Steel bucket and boom cylinder guards protect rods, cylinders, HRVs and piping from falling objects.

## Auxiliary hydraulics and dedicated drain lines

The machine can be factory fitted with a wide variety of hydraulic lines, using breaker and shear piping as well as rotator piping.

## Track-chain guards

Full-length track-chain guards keep out demolition debris and prevent rebar and other sharp objects from lodging in the tracks.





#### **Cooling fan**

The hydraulically-driven, electronically controlled cooling features a reversible functionality to enable self-cleaning of the cooling units.

#### **Micro-mesh screen**

A micro-mesh screen on the doors and engine cowl keeps out particles and boosts engine performance.

#### **Double-thickness side doors**

Double-thickness side doors on both sides of the superstructure protect coolers and pumps in the event of a side impact.

#### **AdBlue®**

Volvo offers a total AdBlue solution that is quality assured, cost efficient and easily accessible. Contact your Volvo dealer for more information.

#### **Cleaning air gun**

Volvo now offers a unique, optional air compressor system, which can be used to clean the cab whenever necessary.

# Demolition, recycling and waste applications

Presenting a full range of:

Crawler Excavators, Wheeled Excavators, Wheel Loaders, and Volvo Services for superior operator safety, performance and controllability in demolition, recycling and waste applications.



EC750EHR



EC480EHR



EC380EHR



EC750E



EC480E



EC380E



EC300E



EC250E



ECR355E



ECR235E



EC220E



EC180E



EC160E



ECR145E



EC140E



ECR88D



ECR58D



EC55C



**ECR50D**



**ECR40D**



**ECR35D**



**EC35D**



**EC27D**



**ECR25D**



**EC20E**



**EC18E**



**EW240E**  
(Material Handler)



**EW220E**



**EW180E**



**EWR170E**



**EW160E**  
(Elevated Cab)



**EW160E**



**EWR150E**



**EW60E**



**L120H**



**L110H**



**L90H**



**L70H**



**L60H**



**L50H**



**L45H**



**L35G**



**L30G**

Not all products are available in all markets. Under our policy of continuous improvement, we reserve the right to change specifications and design without prior notice. The illustrations do not necessarily show the standard version of the machine.

**VOLVO**

**Volvo Construction Equipment**

[volvoce.com](http://volvoce.com)